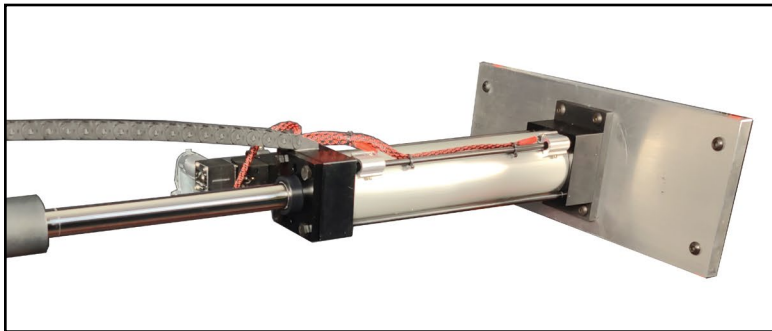


SureFire Spark Igniter Retraction Device



Pneumatic High Energy Spark Igniter (HESI) & High Tension Spark Igniter (HTSI) insertion and retraction device

To automate the insertion and retraction of your SureFire™ spark igniters, Fireeye offers the pneumatically actuated retraction device. This device is available in standard retraction stroke lengths of 6", 9", 12", and 18". Greater stroke lengths are available on request. The spark igniter retraction device design is coaxial allowing the 16mm outside diameter (OD) spark igniters to fit snugly inside the shaft of the linear actuator. This coaxial design reduces space requirements and external parts. Insertion or retraction can be activated by sending an electrical signal to the pilot solenoid valve.



Shown above, an in house model with the linear actuator is mounted to an aluminum plate to replicate a burner front. A variety of installation mounting options are available, allowing the spark igniter to be positioned in multiple configurations for optimum burner insertion and retraction. HESI & HTSI retraction devices are available in kit form for easy onsite component assembly and installation.

The SureFire retraction system utilizes coaxial mounting of the HESI or HTSI rod to provide a compact arrangement. The standard retractors are available in 6", 9", 12", and 18" retraction lengths, all of which are pneumatically operated from a clean and dry air supply at a nominal 60-80 psig. Use of an air pressure regulator is recommended. Retractors are fitted with a 5/2 way solenoid, available in standard or ATEX versions as required.



SUREFIRE™



Pilot Solenoid Valve



Air Pressure Regulator



Specifications

Materials

- Main cylinder: extruded aluminum
- End caps: die-cast aluminum
- Retraction rod: stainless 316

Environment temperature

- Standard temperature: -40°C to 80°C
- High temperature: -10°C to 150°C (short peak 200°C)

Weights

- 6" retraction: 3.8 Kg
- 9" retraction: 4.6 Kg
- 12" retraction: 5.5 Kg
- 18" retraction: 7.1 Kg

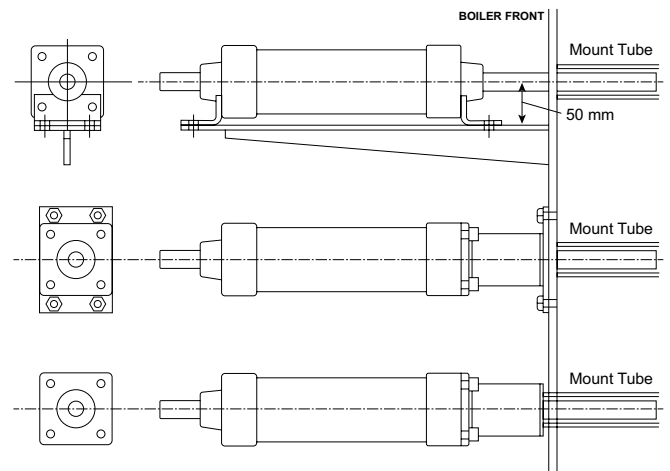
Solenoid actuators

- Electrical: 24VDC 5W (110/230VAC 8.5VA option)
- Environment temperature: -40°C to 80°C (Standard and ATEX versions)

Air supply

- Clean dry air at 6Barg (Max 10Barg, Min 3Barg)

Mounting options



For more information, please [contact](#) your local Fireye Distributor.

fireye.com

MF-00-4-0010-0-003-A (2021/09)

All trademarks and service marks referred herein are property of their respective owners.

©2021 Carrier. All Rights Reserved. Fireye is a part of Carrier.

Join us on 

