



Integrated Flame Scanner with internal flame relay 95IR / 95UV / 95DS

**Microprocessor-based flame scanner
utilizing solid-state infrared (IR),
ultraviolet (UV) or dual (IR/UV) sensors**



The Fireeye InSight Type 95 flame scanners incorporate an internal flame relay with adjustable on/off thresholds, thereby eliminating the need for a remote flame amplifier.

All Fireeye inSight scanner models are powered by 24 Vdc, have either a twelve-pin electrical quick disconnect or 10 ft. cable ("CG" models), and contain electronic self-checking (no mechanical shutter required). The scanners contain an eight-character alpha-numeric LED display and a four push-button keypad to enable the user to view operating parameters and select setpoints.



The following models of Insight I are effectively obsolete as of 2/5/2020.

Original Part Designation	Recommended Replacement Part
95UVS1-1 (all versions including E's)	95UVS4-1WINC
95UVS1-1CG (all versions including E's)	95UVS4-1WINC with associated cable
95IRS1-1 (all versions including E's)	95IRS4-1WINC
95IRS1-1CG (all versions including E's)	95IRS4-1WINC with associated cable
95UVS2-1 (all versions including E's)	95UVS4-1WINC
95UVS2-1CG (all versions including E's)	95UVS4-1WINC with associated cable
95IRS2-1 (all versions including E's)	95IRS4-1WINC
95IRS2-1CG (all versions including E's)	95IRS4-1WINC with associated cable
95UVS2-1CEX (all versions including E's)	95UVS4-1CEX
95IRS1-1CEX (all versions including E's)	95IRS4-1CEX



InSight Flame Scanners

Specifications

MECHANICAL

Housing Material	Cast aluminum with gray polyester powder coat finish
Housing Weight	4.3 lbs. (1.96kg) or 5.9 lbs. (2.70kg) "CG" models, flange additional
Environmental	NEMA 4X, IP66, Class I Div 2, Groups A, B, C, D hazardous areas
Mounting	Requires one of two threaded mounting flanges, ordered separately (see below)
Mounting Flanges P/N 60-2692	1" NPT female pipe mount with 3/8" NPT female cooling air connection, includes 1" NPT x 3" long heat insulating nipple (P/N 35-127-1)
P/N 60-2693	1" BSP female pipe mount with 3/8" BSP female cooling air connection, includes 1" BSP x 3" long heat insulating nipple (P/N 35-127-3)

COOLING/PURGE AIR REQUIREMENTS

Source	Clean, dry, cool
Volume	4SCFM (113 l/min) at 3/8" threaded mounting flange, or 1" "Y" fitting, mounted on scanner sight pipe. Temperature near the upper limit of the scanner operating range and/or use with dirty/dusty fuels may require up to 15 SCFM (425 l/min)
Pressure	Adequate to overcome furnace or windbox pressure
Temperature Rating	-40°F to +150°F (-40°C to +65°C)
Humidity	0% to 95% relative humidity, non-condensing

ELECTRICAL

Input Power	24 Vdc, +10%, -15% supply current 0.35 A, 8.5 V A
Electrical Connection	12-pin quarter-turn quick-disconnect or 10ft. (3m) captive cable ("CG" models)
Flame Relay Output	SPST (N.O.)
Fault Relay Output	SPST (N.C.)

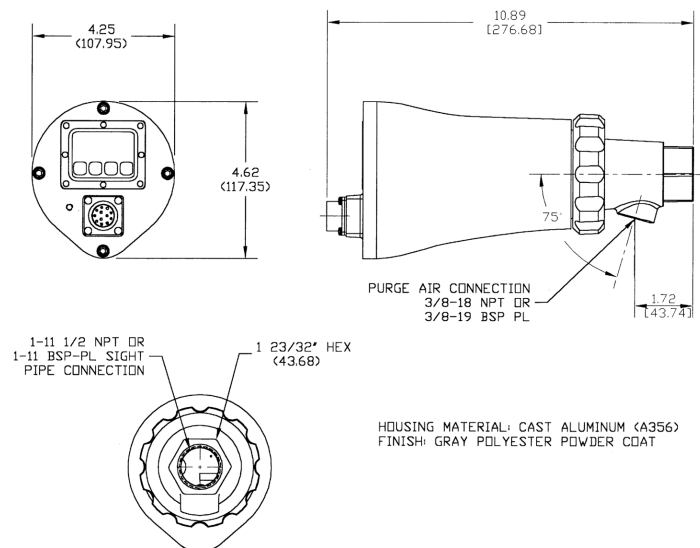
ELECTRICAL

Contact Rating	Minimum: 10 mA @ 5 Vdc Maximum: 2 A @ 30 Vdc 2 A @ 50 Vac (CE approved non "CG" models) 2 A @ 240 Vac (all FM and CSA models, all "CG" models)
Analog Output	4-20mA dc current, referenced to 24 VDC common, maximum connected load 750 ohms
Status Indication	Eight (8) character alpha-numeric LED display (scrolling capability)
Operator Interface	Four (4) pushbutton-style keys

CABLE SPECIFICATION

P/N 59-497	Multi-core, 12 conductor (color coded) with overall braided shield Six #18 AWG and four #22 AWG conductors, plus one #22 AWG twisted pair Cable jacket: Irradiated Modified Polyolefin (flame-retardant, low smoke, zero halogen) Nominal outer diameter: 0.41" (10.4mm) Maximum outer diameter: 0.43" (10.9mm) Maximum cable length: 1,000 ft. (305m)
------------	---

Dimensions



For more information, please [contact](#) your local Fireye Distributor.

fireye.com

MF-00-2-5000-0-022 (2022/11)

All trademarks and service marks referred herein are property of their respective owners.

©2022 Carrier. All Rights Reserved. A Carrier Company

Join us on

