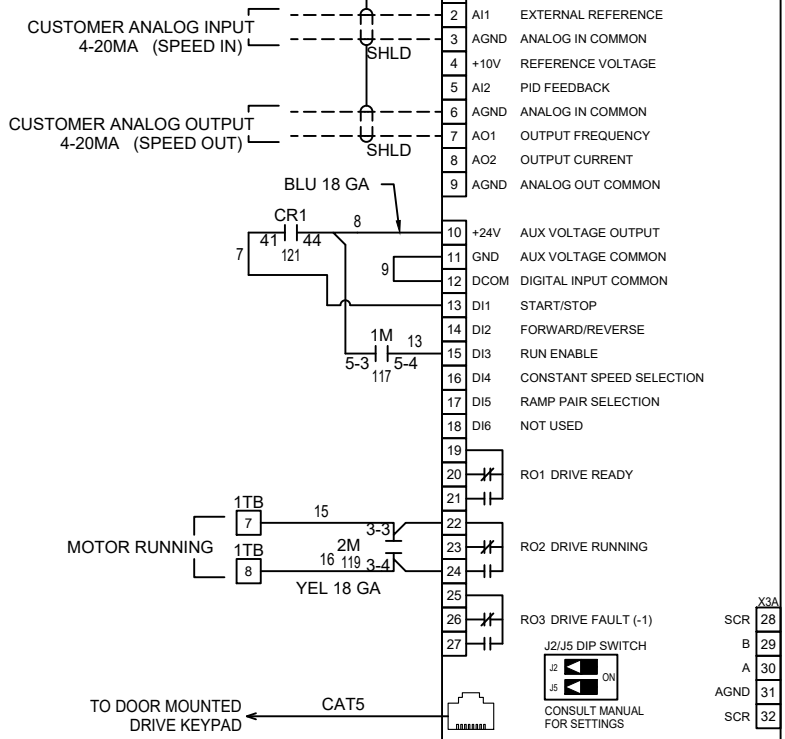
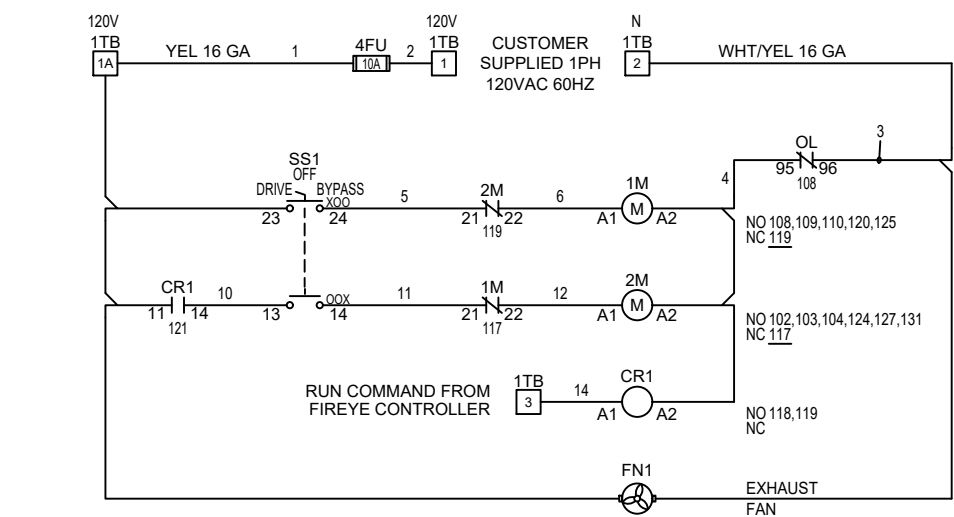
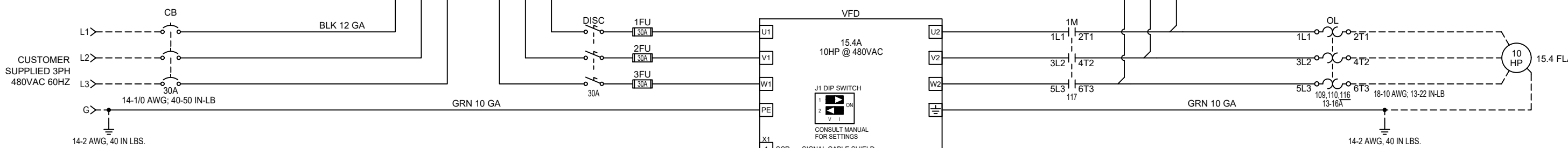


101
102
103
104
105
106
107
108
109
110
111
112
113
114
115
116
117
118
119
120
121
122
123
124
125
126
127
128
129
130
131
132
133
134
135
136
137
138
139

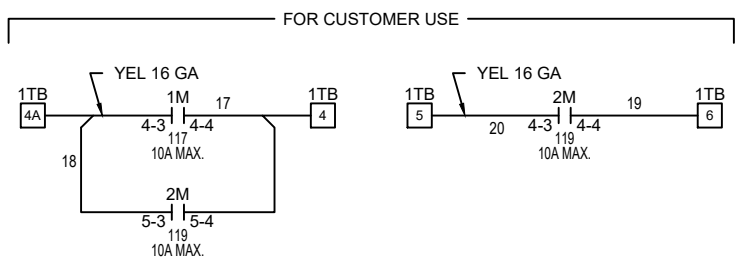
FLA = 15.4 A
SCCR = 100 KA



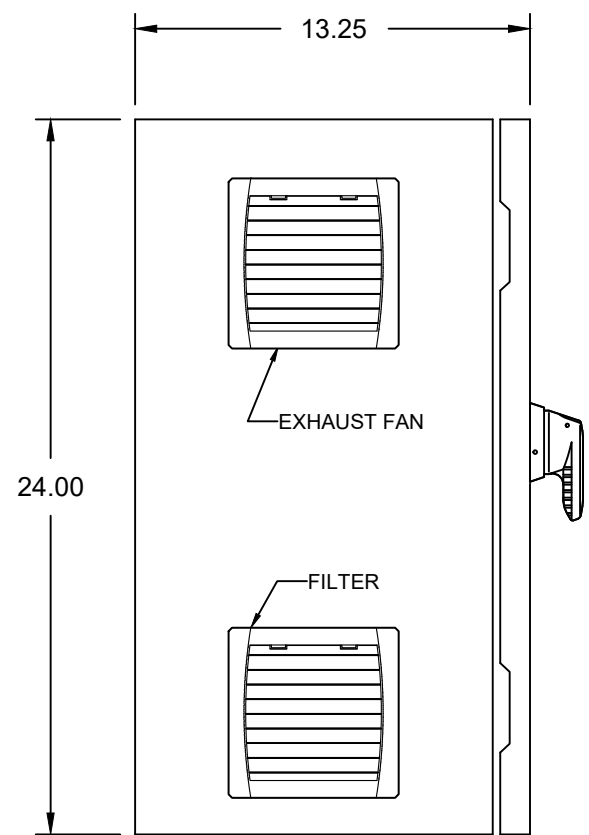
These parameters have been changed prior to shipment			These parameters must be set during commissioning by the customer		
Parameter Number	Parameter Name	Parameter Value	Parameter Number	Parameter Name	Parameter Value
9901	LANGUAGE	ENGLISH (AM)	9905	MOTOR NOM VOLT	*
9902	Applic Macro	ABB Standard	9906	MOTOR NOM CURR	*
1001	EXT1 COMMANDS	DI1	9907	MOTOR NOM FREQ	*
1003	DIRECTION	FORWARD	9908	MOTOR NOM SPEED	*
1201	CONST SPEED SEL	NOT SEL	9909	MOTOR NOM POWER	*
1301	MINIMUM AI1	20%	3413	OUTPUT 2 MIN	Param 34.09 x 1.34 **
1504	MINIMUM AO1	4 mA	3414	OUTPUT 2 MAX	Param 34.10 x 1.34 **
1510	MINIMUM AO2	4 mA	* - From Motor Data Nameplate		
1601	RUN ENABLE	DI3	** - Multiply the value in parameter 34.xx by 1.34 and enter the result		
2101	START FUNCTION	DC MAGN			
2201	ACC/DEC 1/2 SEL	NOT SEL			
2202	ACCELER TIME 1	30.0			
2203	DECELER TIME 1	30.0			
3002	PANEL COMM ERR	LAST SPEED			
3401	SIGNAL 1 PARAM	AI1			
3402	SIGNAL 1 MIN	20%			
3404	OUTPUT 1 DSP FORM	+0.0			
3405	OUTPUT 1 LIMIT	mA			
3406	OUTPUT 1 MIN	4 mA			
3407	OUTPUT 1 MAX	20 mA			
3408	SIGNAL 2 PARAM	POWER			
3411	OUTPUT 2 DSP FORM	+/- 0.0			
3412	OUTPUT 2 UNIT	HP			
3415	SIGNAL 3 PARAM	OUTPUT FREQ			

INSTURCTIONS FOR CORRECTING INCORRECT MOTOR ROTATION		
BYPASS	DRIVE	REMEDY
CORRECT	CORRECT	1
INCORRECT	CORRECT	2
CORRECT	INCORRECT	3
INCORRECT	INCORRECT	4

REMEDY TABLE	
1	NO ACTION REQUIRED
2	EXCHANGE ANY TWO WIRES AT BOTTOM OF CIRCUIT BREAKER (CB)
3	EXCHANGE ANY TWO WIRES AT OUTPUT TERMINALS OF DRIVE (U2 V2 W2)
4	EXCHANGE ANY TWO MOTOR WIRES AT OL (2T1 4T2 6T3)

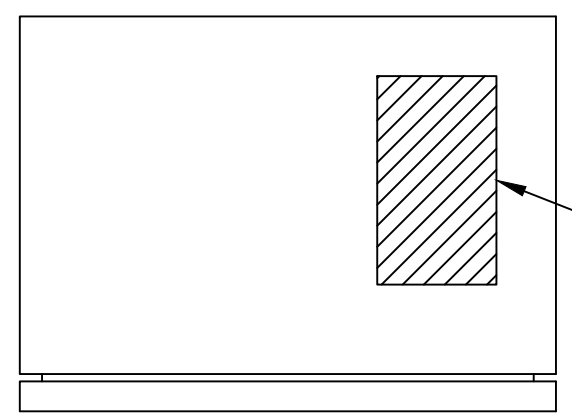


- NOTES:
- PROGRAMMING MACRO = ABB STANDARD. TERMINAL STRIP X1 PIN DEFINITIONS ARE FOR ABB STANDARD MACRO.
 - REFER TO USER MANUAL FOR OPERATION, CONNECTIONS AND TIGHTENING TORQUE VALUES.
 - CUSTOMER REQUIRED TO PROVIDE BRANCH CIRCUIT PROTECTION AND DISCONNECTING MEANS PER NEC AND LOCAL CODE.
 - DASH LINES INDICATE CUSTOMER INSTALLED DEVICES AND WIRING. USE ONLY COPPER WIRE RATED FOR 75°C INSULATION

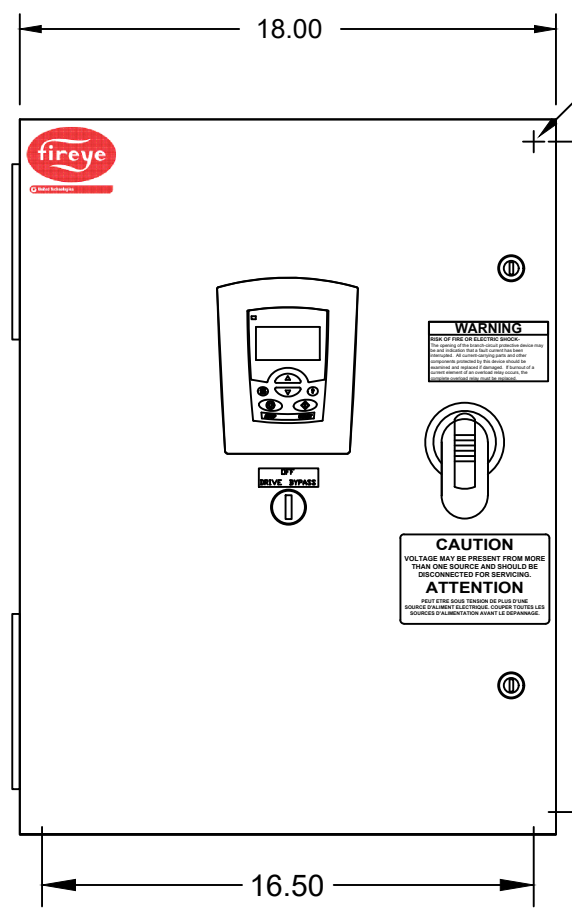


ALLOW 4-6"
BETWEEN ENCLOSURES
FOR COOLING

TOP VIEW



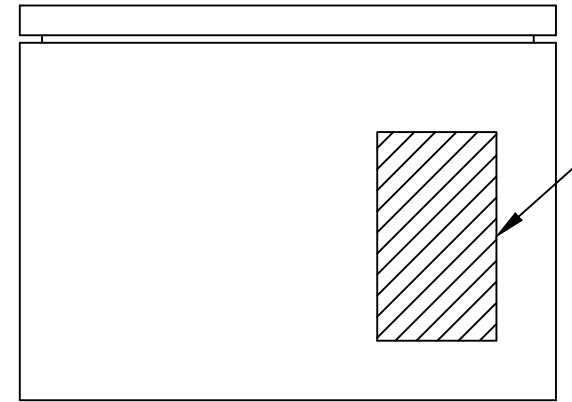
RECOMMENDED CONDUIT
INSTALLATION AREA



Ø0.50 MTG HOLES

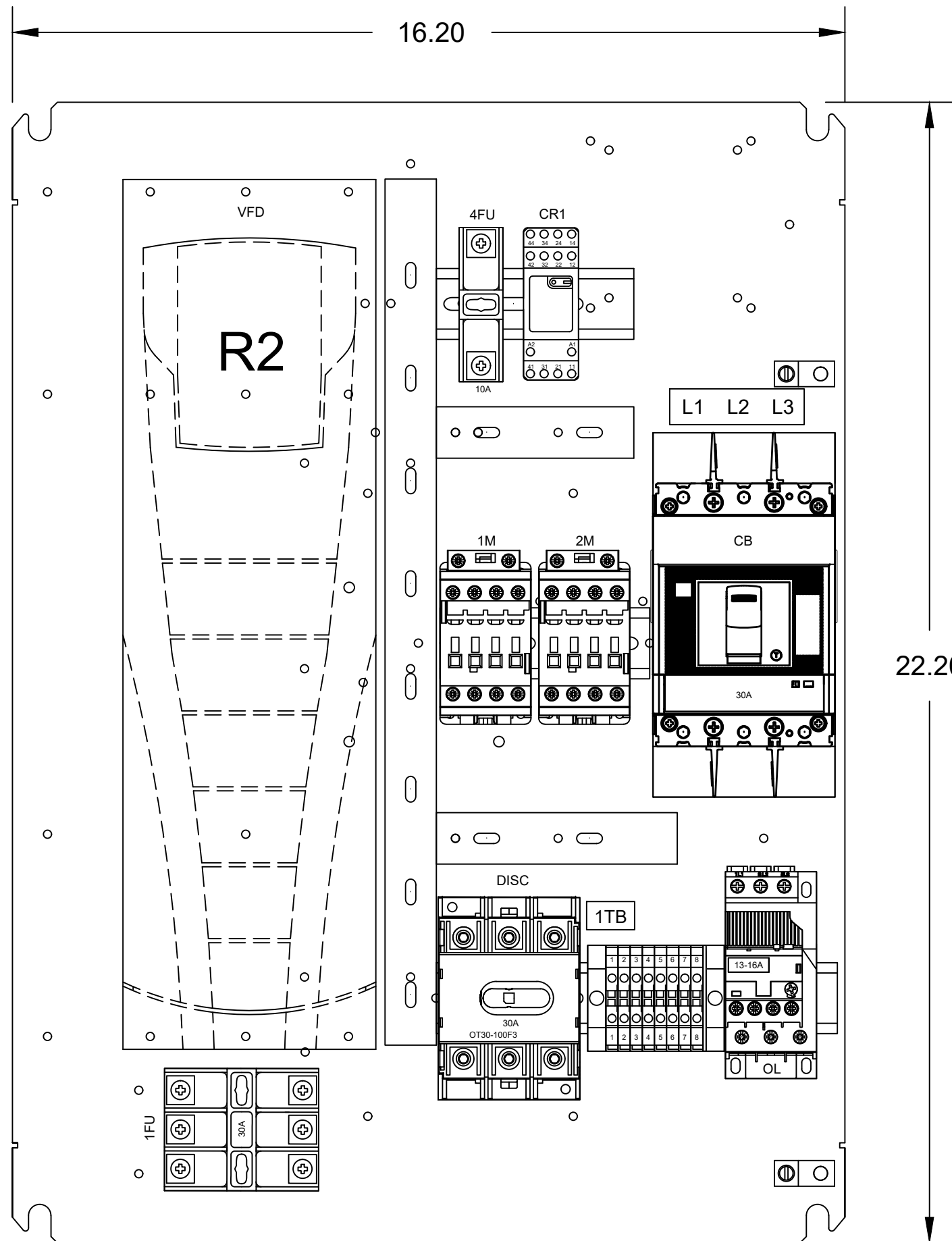
ELECTRICAL SERVICE:
TOP ENTRY/BOTTOM EXIT
APPROX. WEIGHT = 75 LBS

BOTTOM VIEW



RECOMMENDED CONDUIT
INSTALLATION AREA

D	REVISED PER CUSTOMER COMMENTS	05/04/20	JDA		PROJECT NAME ACS550 DRIVE W/ CLASSIC BYPASS 10HP 460VAC TYPE 12	DESCRIPTION ENCLOSURE LAYOUT	DRAWN BY BMJ	DRAWING NUMBER ACS550-CC-015A-4+B055+F267+X1606	DATE PREPARED 10/07/16	REFERENCE NUMBER	SHEET 2
C	REVISED TO XT/AF COMPONENTS	04/03/19	DJR				CHECKED BY DJR				
REV	DESCRIPTION	DATE	BY				APPROD BY AKM				



D	REVISED PER CUSTOMER COMMENTS	05/04/20	JDA
C	REVISED TO XT/AF COMPONENTS	04/03/19	DJR
REV	DESCRIPTION	DATE	BY




PROJECT NAME
ACS550
 DRIVE W/ CLASSIC BYPASS
 10HP 460VAC TYPE 12

DESCRIPTION
SUB PANEL LAYOUT

DRAWN BY
BMJ
 CHECKED BY
DJR
 APPR'D BY
AKM

DRAWING NUMBER ACS550-CC-015A-4+B055+F267+X1606		REFERENCE NUMBER	SHEET
DATE PREPARED 10/07/16			3

QTY	TAGS	PART NUMBER	MFG	DESCRIPTION
1	CR1	1SVR405611R7100	ABB	MINIATURE RELAY (w/LED), 250V, 12A, 2 FORM C, 110VAC COIL
1	CR1	1SVR405651R1000	ABB	STANDARD SOCKET FOR 2 c/o, CR-M
1		3AUA0000003983	ABB	GASKET, BACK OF KEYPAD HOLDER
1		3AUA0000004904	ABB	GASKET, INSIDE OF KEYPAD HOLDER
1		3AUA0000007041	ABB	GASKET, BACKSIDE OF KEYPAD
1		3AUA_NUMBER	ABB	FIREYE LOGO DECAL
1		3AXD50000042424	ABB	KEYPAD EYEBROW, FIREYE
1		64765825	ABB	ACS550 KEYPAD HOLDER
1	VFD	ACS550-U0-015A-4+J400	ABB	AC DRIVE - 3-PHASE 380/480V, 10HP, 15.4A, WALL MOUNTING
1	1M	AF09-30-01-13	ABB	CONTACTOR, 3 POLE, 25A, 2/5/7.5HP, 100-250VAC/DC COIL, 1NC
1	2M	AF16-30-01-13	ABB	CONTACTOR, 3 POLE, 30A, 5/10/15HP, 100-250VAC/DC COIL, 1NC
3		C-106-2PM	ABB	ZINC/STEEL DIN RAIL EN 50022 (35mm x 7.5mm x 2m)
1	SS1	C3SS110B-20	ABB	SELECTOR SWITCH - 3-POS - MAINTAINED, 2 NO
5	1M 2M	CA4-10	ABB	AUXILIARY CONTACT BLOCK, FRONT MOUNTED 1 NO
1	OL	DB42	ABB	OVERLOAD RELAY MOUNTING BASE, TF42
2	CB	KXT2CUAL1-3PC	ABB	LUG KIT FOR XT2 CB, 14 AWG-1/0 (SET OF 3)
1	CB	KXTCRHEBFP	ABB	OPERATING MECHANISM, XT2, XT4 FRAME T-MAX CB
1		LABEL-CAUTION	ABB	CAUTION LABEL DECAL
1		LABEL-WARNING	ABB	WARNING LABEL DECAL
1	CB	OHB65J10B	ABB	OPERATOR HANDLE, PISTOL, BLACK, PADLOCKABLE, TYPE 1, 3R, 12
1	DISC	OT30F3	ABB	DISCONNECT SWITCH, 30A, 3P, 600VAC, 20HP @ 480V
1	CB	OSP10X500	ABB	OPERATOR SHAFT, 10 X 500mm (19.7")
1	OL	TF42-16	ABB	OVERLOAD RELAY, 13-16AMPS, TRIP CLASS 10
1	CB	XT2LU3030AFF000XXX	ABB	XT CIRCUIT BREAKER, 480VAC, 3 POLE, 30A, UL CURRENT LIMITING, 100KAIC
1	4FU	BCM603-1PQ	BUSSMANN	1 POLE FUSE BLOCK - CLASS CC, 30A
1	1FU	BCM603-3PQ	BUSSMANN	3 POLE FUSE BLOCK - CLASS CC, 30A
1	4FU	FNQ-R-10	BUSSMANN	FUSE - CLASS CC, 600VAC, 10A
3	1FU	KTK-R-30	BUSSMANN	FUSE - CLASS CC, 600VAC, 30A
1		1SNK 505 910 R0000	ENTRELEC	END SECTION - ES4
8	1TB	1SNK 506 010 R0000	ENTRELEC	TERMINAL BLOCK - ZS6, 6mm, GREY
2		1SNK 900 001 R0000	ENTRELEC	END STOP - BAM3
1		ES-241812-ABB-TUB	MCS	ENCLOSURE W/O DOOR, 241812, N12
1		MCS-143	MCS	SUBPANEL, 24" X 18", GEN III, N3R & N12
1		MCS-518	MCS	ENCLOSURE DOOR - 24 X 18 , N12 PXR
3		F.75X1.5WH6	PANDUIT	SLOTTED WIRING DUCT, 3/4 X 1-1/2", WHITE
2	GND1 GND2	LAMA2-14-QY	PANDUIT	GROUND LUG, 2-14 AWG, 1/4" STUD
1	FN1	11622154053	PFANNENBERG	FILTERFAN, EXHAUST, 4" DIA, 38 CFM, 115 VAC (PF 22000"A")
1	FN1	11720004050	PFANNENBERG	GRILL AND FILTER, 4" (PFA 20000)

D	REVISED PER CUSTOMER COMMENTS	05/04/20	JDA		PROJECT NAME ACS550 DRIVE W/ CLASSIC BYPASS 10HP 460VAC TYPE 12	DESCRIPTION BILL OF MATERIALS	DRAWN BY BMJ	DRAWING NUMBER ACS550-CC-015A-4+B055+F267+X1606		
C	REVISED TO XT/AF COMPONENTS	04/03/19	DJR				CHECKED BY DJR	DATE PREPARED 10/07/16	REFERENCE NUMBER	SHEET 4
REV	DESCRIPTION	DATE	BY				APPROD BY AKM			