



INSTALLATION INSTRUCTONS 133-779

P/N 129-197-1 Adapter Kit

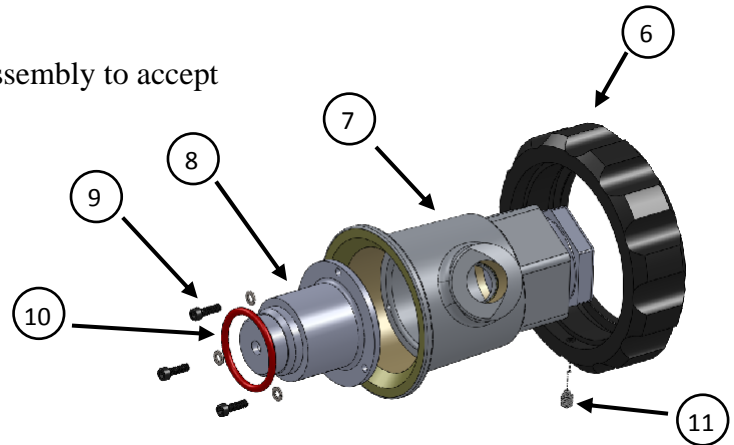
To modify existing Phoenix inner carrier assembly to accept Phoenix Series II flame scanner.

Tools required:

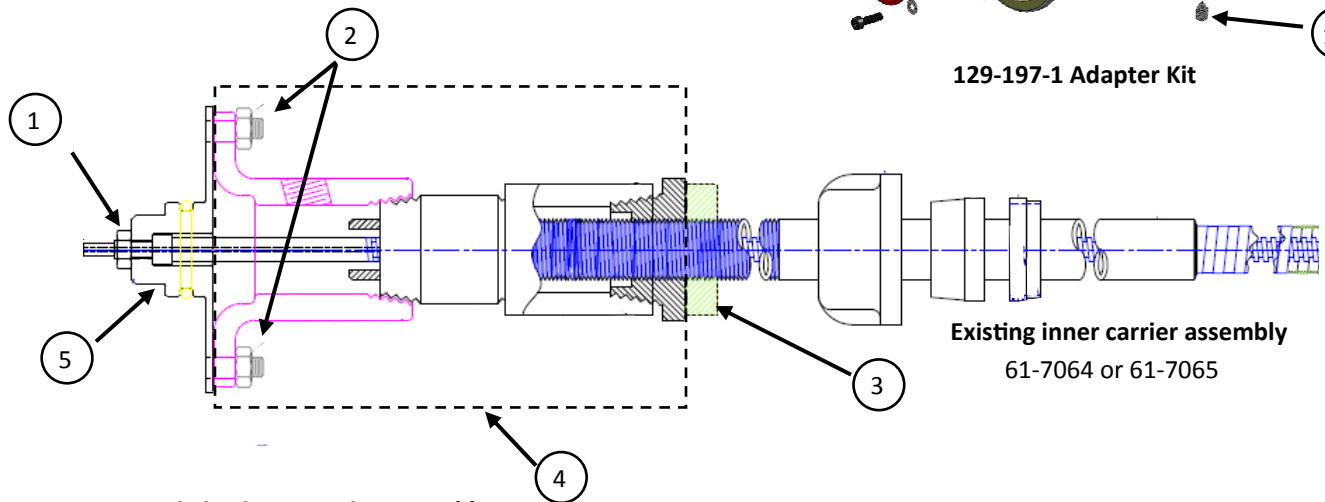
Flat head screwdriver

5/64 Allen wrench

Small needle nose pliers



129-197-1 Adapter Kit



Existing inner carrier assembly
61-7064 or 61-7065

From existing inner carrier assembly:

1. Remove jam nut (item 1)
2. Remove 2 screws (1/4—20) and nuts (item 2)
3. Loosen and back off locknut (item 3) 1.5 inches
4. Back off flange assembly (item 4) approx 1 inch.
5. Hold onto fiber optic bundle and remove adapter (item 5)
6. Remove flange assembly (item 4)

.From 129-197-1 Adapter Kit:

7. Slide locking ring (item 6) over inner carrier assembly. Threads positioned towards exposed fiber optic bundle
8. Thread bushing/flange assembly (item 7) onto inner carrier rigid pipe.
9. Thread Adapter (item 8) onto fiber optic bundle. Bundle should extend 0.60" beyond end of adapter.
10. Re-install jam nut (item 1).
11. Thread bushing/flange assembly (item 7) forward to be flush with adapter (item 8)
12. Secure with 3 screws and washers (item 9)
13. Secure assembly in place with locknut (item 3)
14. Install o-ring (item 10) over adapter (item 8)
15. Mount Phoenix scanner onto adapter and secure with locking ring.
16. Tighten set screw (item 11) with small Allen wrench provided with Adapter kit.