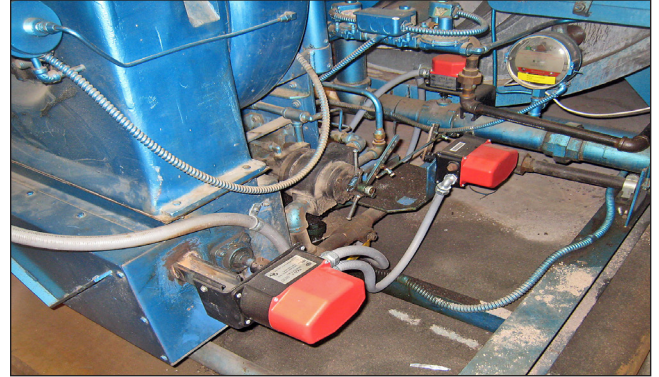
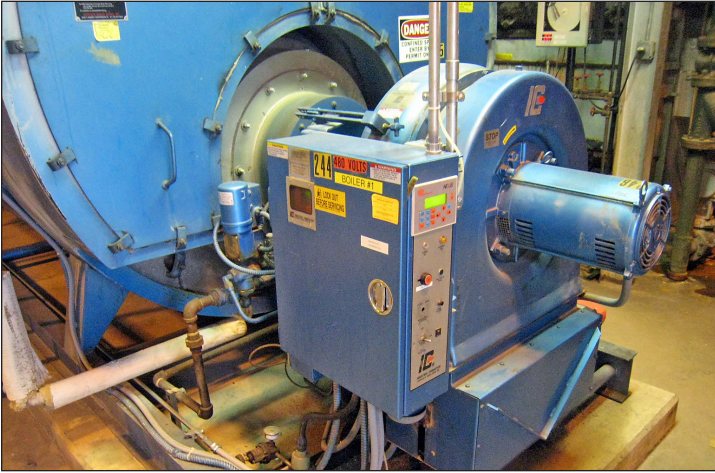


NEXUS™

PPC4000

Fuel/Air Control System



A Nexus™ PPC4000 parallel positioning control system was installed at a cheese processing facility in Wisconsin recently.

The system was installed on a 350 HP Superior Scotch Marine boiler with an IC burner. The Industrial Combustion burner fires natural gas and #2 oil.



The package supplied included a PPC4000 controller, NXD410 display, 3 FX servos and NXCESO2 Oxygen probe.

The Nexus™ retrofit system provides precision fuel/air ratio control, burner management, flame safeguard and O₂ trim. Nexus also offers independent fuel air profiles for each fuel fired, allowing an easy switch between gas and oil while maintaining maximum efficiency.

The facility produces, markets and distributes a wide array of high quality products including cheese, fluid milk, yogurt, dairy ingredients and snack-cakes.

BurCon Services of Green bay Wisconsin performed the installation and commissioning. "The installation went smooth and we have not had one issue since the initial startup." "We are very happy with the control."



The Combustion Control Specialists

3 Manchester Rd • Derry, NH 03038 • USA
603-432-4100 • FAX 603-432-1580
www.fireeye.com

