



## MODERNIZATION ADAPTER PFM-1

**FIREYE™ Modernization Adapter PFM1** is a plug-in assembly designed to assist with the replacement of Fireye 26RJ8 and 29RF5 models (listed below) using infrared flame detection with solid state modular Fireye® Flame-Monitor™ Burner Management Controls

PFM1 MODERNIZATION ADAPTER KIT					
REPLACES	CONTROL UNIT	DISPLAY MODULE	PROGRAMMER	AMPLIFIER MODULE	SCANNER
26RJ8-1008 26RJ8-1018 26RJ8-6008 26RJ8-6018	E110 for 120V OPERATION	ED510	EP260 * (10 AND 15 SEC. TRIAL-FOR-IGNITION) OR EP261 (10 AND 20 SEC. TRIAL-FOR-IGNITION)	E1R1	REPLACE 48PT1 CELL WITH 4-263 OR USE 48PT2 SCANNER
29RF5-1005 29RF5-1015 29RF5-1009 29RF5-6009 29RF5-6015					

THE STANDARD PFM1R MODERNIZATION KIT CONTAINS THE FOLLOWING:  
E110 Control  
ED510 Display Module  
EP260 Programmer Module  
E1R1 Amplifier Module  
4-263 Firetron Cell and Label  
60-2060-1 Adapter

THE E110 CONSISTS OF THE FOLLOWING:  
EB700 Chassis  
EC600 Dust Cover  
48-1836 Mounting Screw

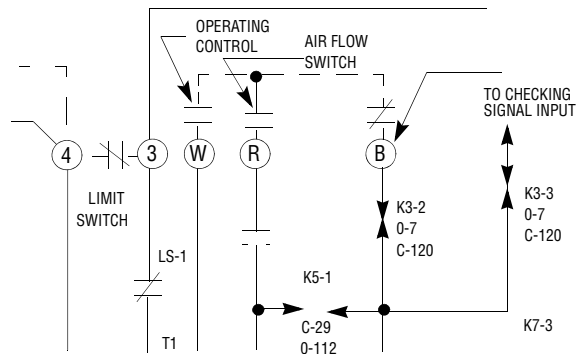
*Programmer EP260 provides a 10 or 15 second main flame trial-for-ignition. An alternate programmer EP261 is available that provides a 10 or 30 second main flame trial-for-ignition. (EP261 must be ordered separately).*

**NOTE:** The original enclosure wiring terminal board may have been exposed to oil, moisture, dirt, etc. which could be absorbed by the board and cause leakage current across signal terminals 14 and 15. Leakage current will cause a false signal to be generated. It may be advisable to re-wire using wiring base 60-1466-2 or 60-1386-2.

- Loosen the two chassis retaining screws and remove the chassis from its enclosure. Note the chassis type and model number.

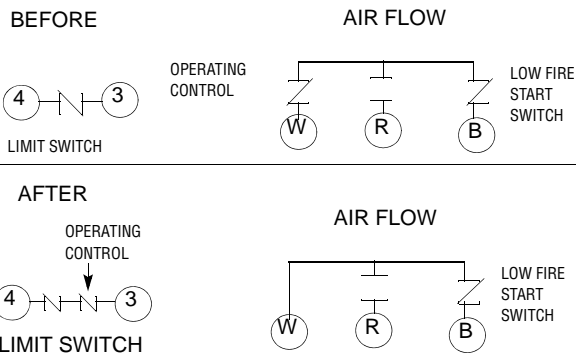


- Verify that the field wiring connected to terminals W-R-B on the enclosure terminal board has 600 volt insulation and that all interlock switches in these circuits (air flow switch, low fire start switch, etc.) are rated for line voltage.

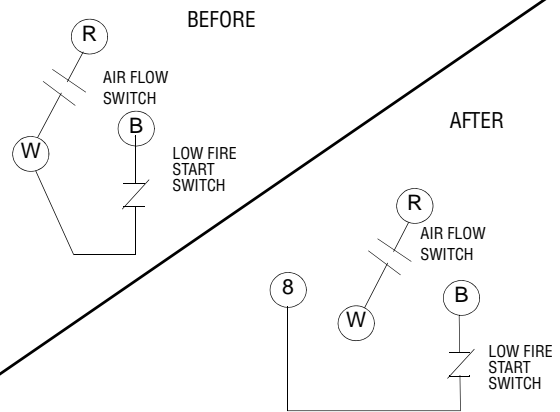


NOTE: Some older "P" series enclosures had unused terminals missing. If your installation does not have a complete enclosure terminal board, replace it with #61-4926 board.

- If any operating control (pressure/temperature) is connected in the W-R circuit, it must be removed and reconnected in series with the limit switches in the 3-4 circuit of the enclosure terminal board.



- If a low fire start switch, any other starting interlock, or a jumper is connected to terminals W and B, it must be reconnected to terminals 8 and B on the enclosure terminal board.



- When a 26RJ8-1008, -6008 control is replaced, a jumper wire must be installed between terminals 12 and 13 on the enclosure terminal board. Remove screw located in FV terminal position.



- When a 29RF5-1009, -6009 control is replaced, the wire connected to terminal 10 must be reconnected to terminal 9. The wire originally connected to terminal 9 must be reconnected to terminal 11, and a jumper wire connected between terminals 7 and 10 on the enclosure terminal board.



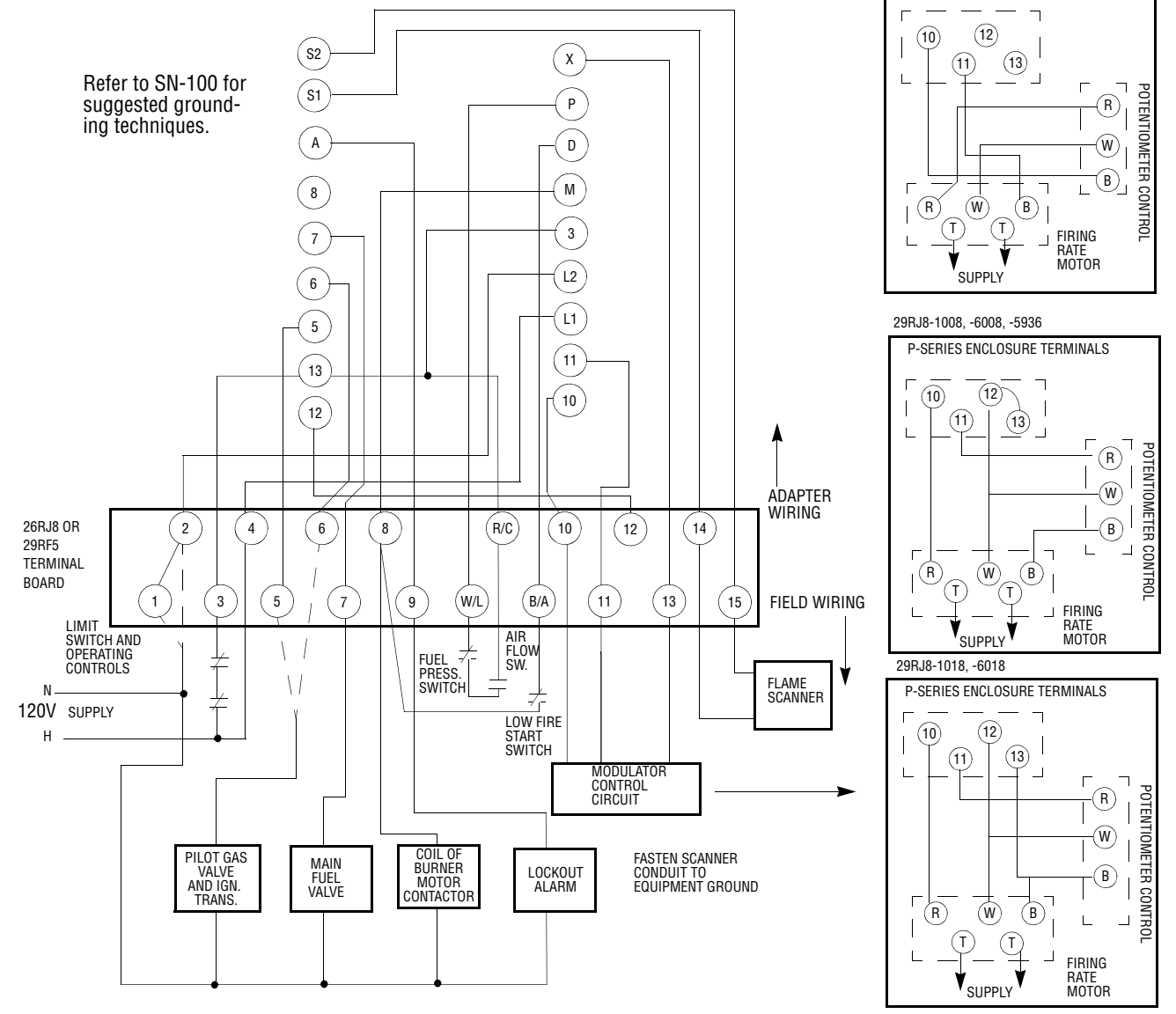
7. Note the typical circuit diagrams figure for complete information.
8. Install the Modernization adapter and tighten the two retaining screws.



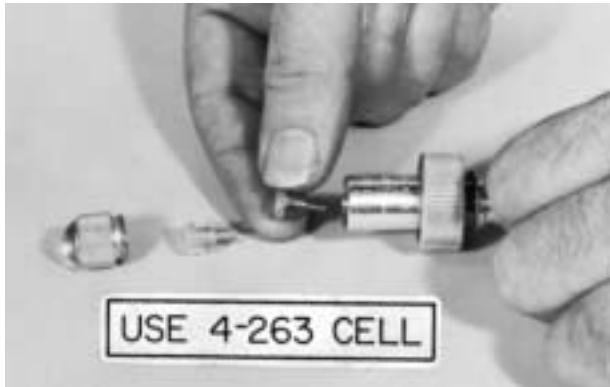
9. Assemble the control and modules and install the unit into the unit into the Modernization Adapter.



Typical circuit diagram for modernizing a Fireye 26RJ8-1008, -1018, -6008, -6018, 29RF5-1005, -1015, -6015 control installation using a PFM1R Modernization Adapter with a Fireye Flame-Monitor.

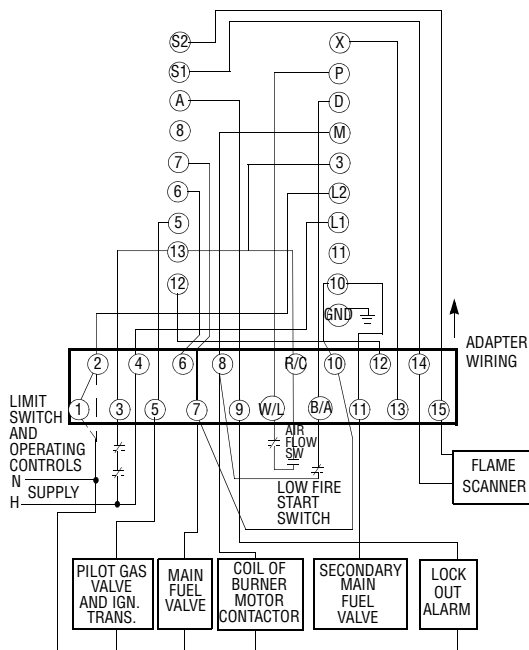


10. Replace the #4-128 Firetron cell in the scanner with the #4-263 Firetron cell. Attach the label supplied with the #4-263 Firetron cell, to the scanner body.



11. Referring to Fireye bulletin EP-2601, turn the power on. Initiate a normal burner start-up and operational test as described for the EP260 program used.
12. For assistance with non-standard installations, contact any Fireye Distributor, listed in the Yellow Pages under "Controls."

Typical circuit diagram for modernizing a 29RF5-1009, -6009 control installation using a PFM1R Modernization Adapter Kit with a Fireye Flame-Monitor. (EP260 Programmer, E1R1 Amplifier) wired for a gas pilot ignited burner.



Typical circuit diagram for modernizing a 29RF5-1009, -6009 control installation using a PFM1R Modernization Adapter Kit with a Fireye Flame-Monitor. (EP260 Programmer, E1R1 Amplifier) wired for a direct spark ignited 2 stage oil burner.

