

NXD410 User Interface



4 line x 40 character dot-matrix backlit LCD

Dimensions:

5.35" (136mm) x 3.78 (96mm) to fit panel cutout
5.875" (149mm) wide x 4.25" (108mm) high

FEATURES/BENEFITS

- Intuitive User Interface
- Quick Access Keys
- Buttons with Tactile Feedback
- NEMA 4X / IP65 Protection

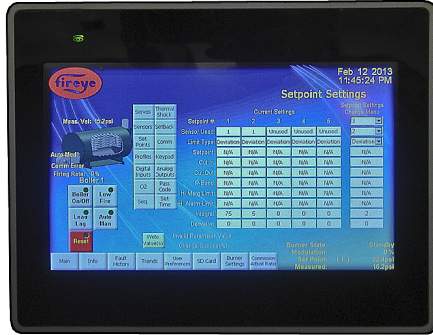


The Combustion Control Specialists

3 Manchester Rd. • Derry, NH 03038 • USA

Tel: 603 - 432 - 4100 • Fax: 603 - 432 - 1570

www.fireeye.com



NXTSD407



NXTSD413

Features & Benefits

- **ENHANCED GRAPHICAL INTERFACE**
- **FLEXIBLE LOCATION CONTROL (LOCAL OR REMOTE SETUP)**
- **NEMA 4X IP66 PROTECTION CATEGORY**
- **TWO DIFFERENT SIZES FOR COMPATIBILITY WITH MOST INSTALLATIONS**
- **FULLY CONFIGURABLE DISPLAY**
- **13" DISPLAY ENUMERATES MULTIPLE BOILERS (UP TO 6 BOILERS)**

Product Overview

The NXTSD407 and NXTSD413 Touch Screen User Interface provides the means to setup, monitor and display all information from the NXF4000 or PPC4000 Control and connected accessories. The touch screens provide all of the functions required to control and monitor the burner. Besides status monitoring, it can be used to setup and commission the control.

The NXTSD407 is a 7" widescreen TFT color touchscreen that is panel mounted and connects directly to the NXF4000 or PPC4000 using Fireeye cable kit 129-196. The NXTSD407 is designed to monitor only one boiler control.

The NXTSD413 is a 13" widescreen TFT color touchscreen. The NXTSD413 display is panel mounted and connects directly to the NXF4000 or PPC4000 using Fireeye cable kit 129-196. The NXTSD413 display is designed to monitor multiple burner controls (up to six). When multiple burner controls are available, information on each unit can be selected by using the Burner Select drop down field.

