

DIGITAL BAR GRAPH METER (LED) P/N 61-5560

APPLICATION

The Digital Bar Graph Meter, P.N 61-5560, is comprised of shift registers coupled to a light emitting diode (LED) display. Flame output signal intensities ranging from zero to 1024 pulses/second provided on Fireye controls are displayed on the meter across its' vertical ten-LED scale. The table below is a convenient tabulation of flame signal intensities versus illuminated LEDs.

Illuminated LEDs	Flame Signal Intensity (Pulses/second) Equal to or Greater than:
0	1024
9	512
8	256
7	128
6	64
5	32
4	16
3	8
2	4
1	2

NOTE: If two enabled scanners, connected to one control, are detecting flame simultaneously, the meter will display the sum of the two flame intensities.

SPECIFICATIONS

Range: 0-1024 Pulses/second

Power Input: + 24 VDC

Operating Temperature Range: 32-158°F (0 - 70°C)

Current Rating: 25mA max.

Weight: 3 lbs. (.14 Kg)

METER AND CONTROL WIRING

Meter connections to the following controls are as follows:

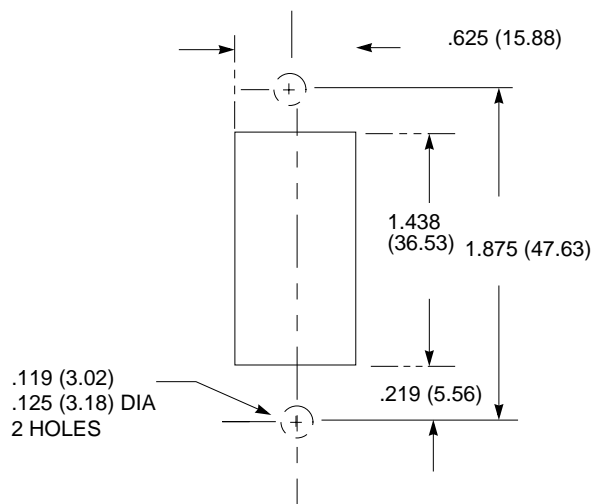
Type 25SU3-5172/5173 control — see bulletin CU-23

TABLE 1

METER P.N 61-5560	60-1076 Amplifier Rack	5172/5173 Control
GND	C	PL1
+ 24VDC	FM3	PL4
SIG	FM4	PL7

INSTALLATION

Panel Mounting



NOTES:

- METER DEPTH
3.06 (77.72) INCHES
- DIMENSIONS IN PARENTHESIS
ARE IN MILLIMETERS.