

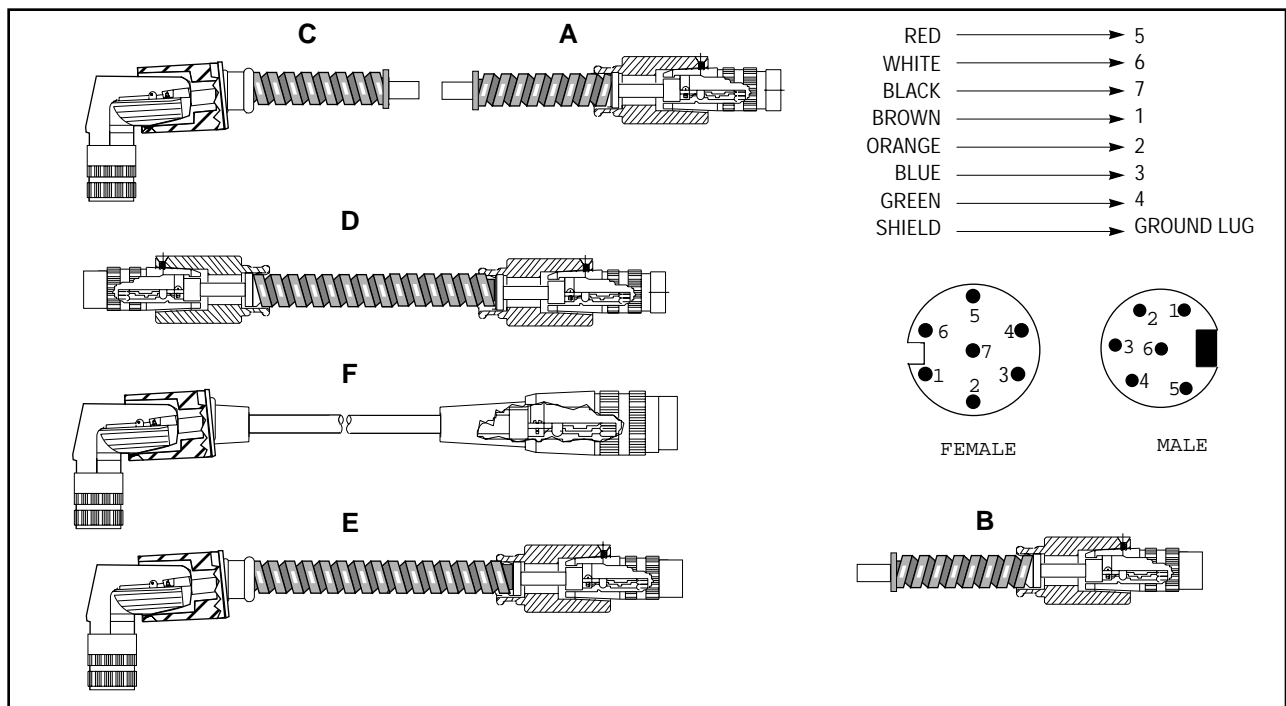
ACCESSORIES FOR USE WITH THE FIREYE FOCUS™ COMBUSTION EFFICIENCY SYSTEM

DESCRIPTION

The accessories depicted in this bulletin are intended for use with the Fireye FOCUS Combustion Efficiency System.¹

PREFABRICATED CABLES

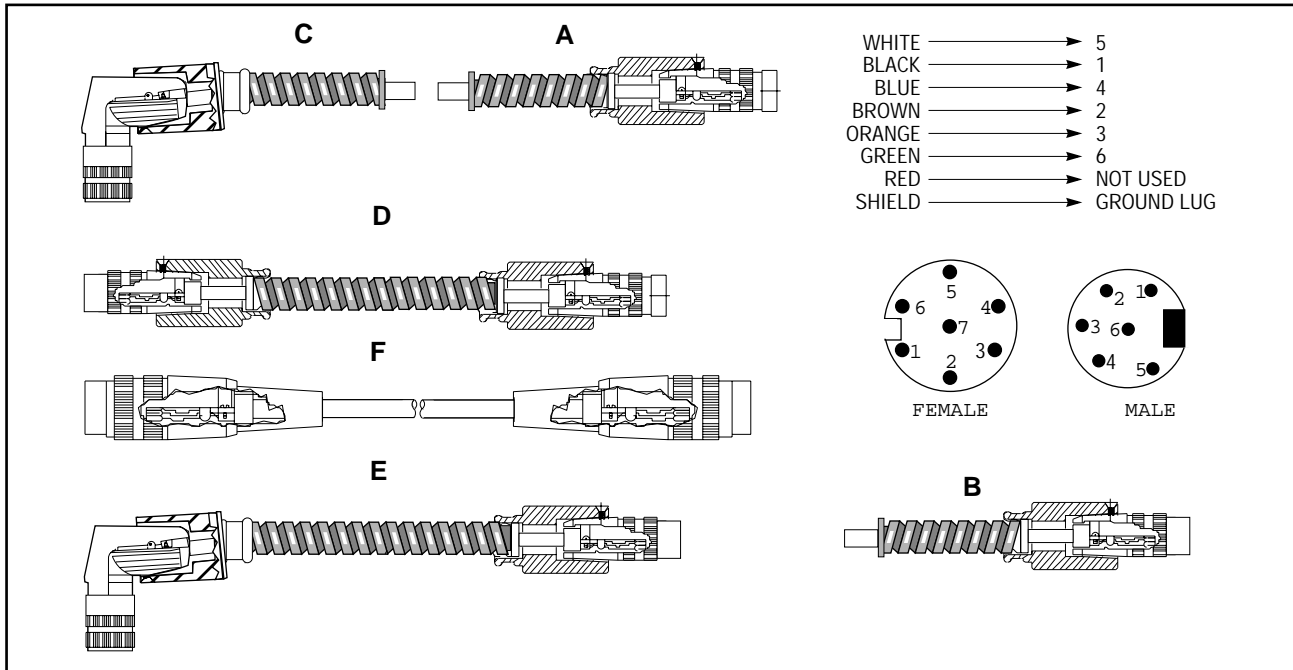
FIGURE 1. ACTUATOR CABLE



WARNING: Remove the power from the 60-2555 mounting rack prior to connecting or disconnecting any actuator cable AC59-XXX. FAILURE TO REMOVE POWER MAY RESULT IN COMPONENT DAMAGE.

¹. Patent Pending

FIGURE 2. SCANNER CABLE



WARNING: Remove the power from the 60-2555 mounting rack prior to connecting or disconnecting any scanner cable SC59-XXX. FAILURE TO REMOVE POWER MAY RESULT IN COMPONENT DAMAGE.

PART NUMBER	DESCRIPTION	FIGURE	USE WITH
ACC-59-10FF	10 ft. metal flex, 1 female straight connector, flying leads	1 A	Actuator
ACC-59-10FM	10 ft. metal flex, 7 pins male straight connector, flying leads	1 B	Controller
ACC-59-10F90	10 ft. metal flex, 1 female right angle connector, flying leads	1 C	Actuator
ACC-59-10D	10 ft. metal flex, 1 right female and 1 straight male connectors	1 D	Actuator and Controller
ACC-59-10D90ST	10 ft. metal flex, 1 right female and 1 straight male connectors	1 E	Actuator and Controller
AC-59-10	10 ft. cable with two connectors	1 F	Actuator and Controller
AC-59-25	25 ft. cable with two connectors	1 F	Actuator and Controller
AC-59-50	50 ft. cable with two connectors	1 F	Actuator and Controller
AC-59-75	75ft. cable with two connectors	1 F	Actuator and Controller
SCC-59-10FF	10 ft. metal flex, 1 female straight connector, flying leads	2 A	Scanner
SCC-59-10FM	10 ft. metal flex, 6 pins 1 male straight connector, flying leads	2 B	Controller
SCC-59-10F90	10 ft. metal flex, 1 female right angle connector, flying leads	2 C	Scanner
SCC-59-10D	10 ft. metal flex, 2 straight connectors male and female	2 D	Scanner and Controller
SCC-59-10D90ST	10 ft. metal flex, 1 right female and 1 straight male connectors	2 E	Scanner and Controller
SC-59-10	10 ft. cable with two connectors	2 F	Scanner and Controller
SC-59-25	25 ft. cable with two connectors	2 F	Scanner and Controller
SC-59-50	50 ft. cable with two connectors	2 F	Scanner and Controller
SC-59-75	75 ft. cable with two connectors	2 F	Scanner and Controller
59-489	FOCUS cable		JB100
JB100	FOCUS cable junction box, 7 conductors terminal		

FIGURE 3. THERMOCOUPLE CABLE



Use only Type K thermocouple wire to connect thermocouples to the CES1000. Thermocouple extension wire should only be used to connect thermocouples to instrumentation. **Polarity is critical. See Bulletin CES-1001 for details.**



WARNING: Do not run thermocouple leads in conduits containing power wiring, and do not run conduit carrying thermocouple leads parallel to electric buss bars and heavy power carrying conduits. Cross buss bars and power carrying conduits at right angles with thermocouple conduits when necessary.

FIGURE 4. STACK TEMPERATURE SENSOR STS100-12A

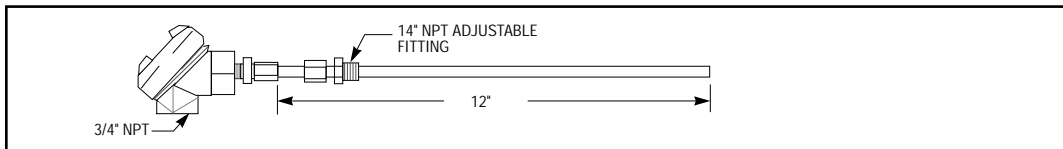


FIGURE 5. JUNCTION BOX JB100

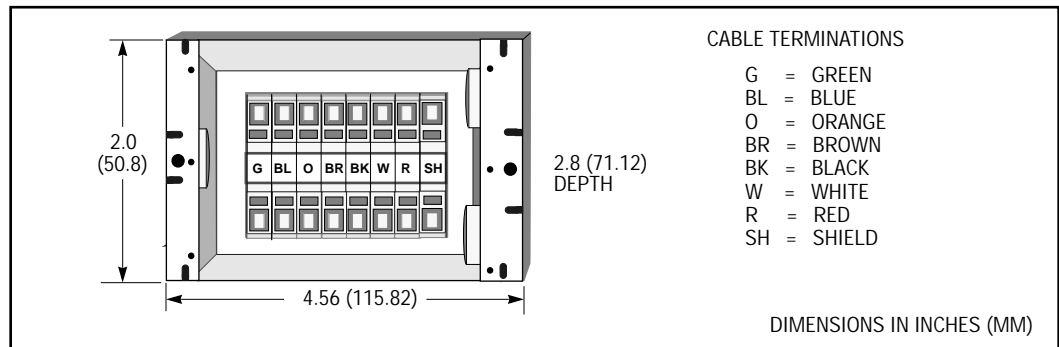
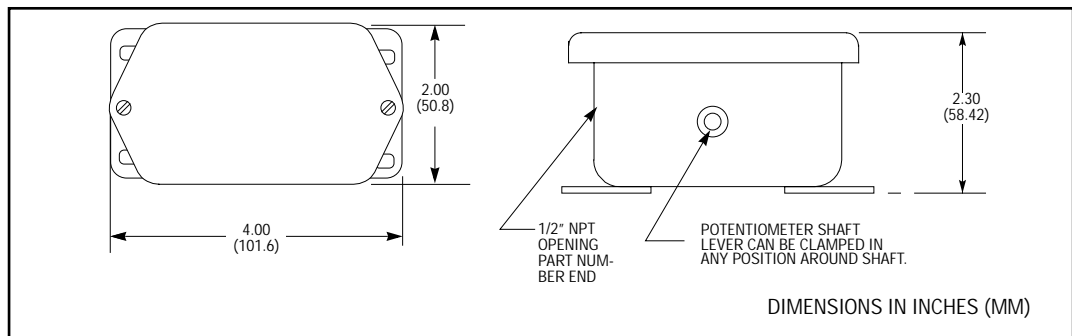


FIGURE 6. FEEDBACK POTENTIOMETER FP5000



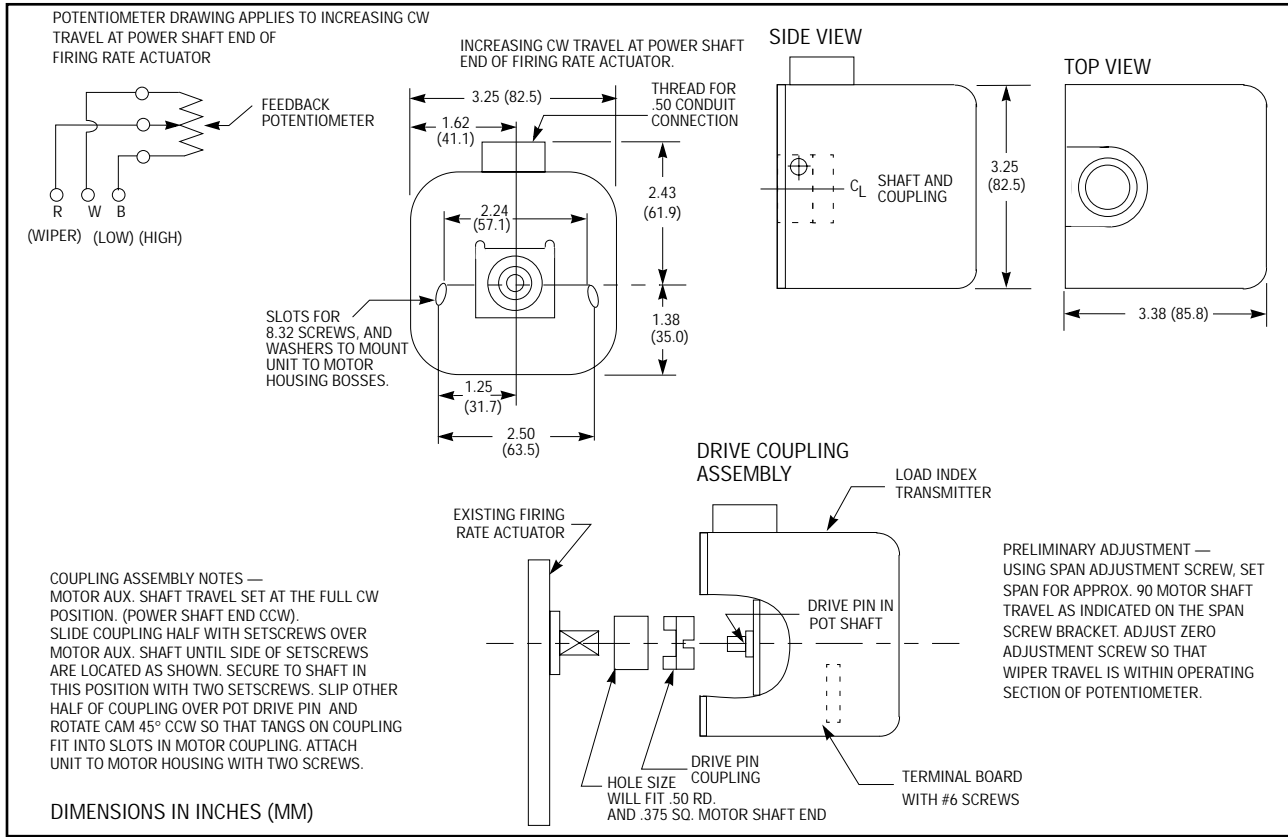
This version of the feedback potentiometer (Figure 6) is designed to be driven by the rotation of the burner jackshaft. It can be mounted above or below the jackshaft.

The lever assembly provided in the kit can be fitted to the shaft. It is generally used when no other existing lever motion representing firing range is available. The potentiometer wiper travel should be maximized by selecting the proper location in each lever.

The output can be viewed by calling it up on the CES1000 controller. See bulletin CES-1001 for details. Increasing load should cause the resistance reading to increase. If the reading decreases, connect to wire on opposite end of potentiometer. The feedback potentiometer shown in Figure 7 mounts on a modulating motor.



FIGURE 7. FEEDBACK POTENTIOMETER FPQ181



NOTICE

When Fireeye products are combined with equipment manufactured by others and/or integrated into systems designed or manufactured by others, the Fireeye warranty, as stated in its General Terms and Conditions of Sale, pertains only to the Fireeye products and not to any other equipment or to the combined system or its overall performance.

WARRANTIES

FIREYE guarantees for one year from the date of manufacture of its products to replace, or, at its option, to repair any product or part thereof (except lamps, electronic tubes and photocells) which is found defective in material or workmanship or which otherwise fails to conform to the description of the product on the face of its sales order. **THE FOREGOING IS IN LIEU OF ALL OTHER WARRANTIES AND FIREYE MAKES NO WARRANTY OF MERCHANTABILITY OR ANY OTHER WARRANTY, EXPRESS OR IMPLIED.** Except as specifically stated in these general terms and conditions of sale, remedies with respect to any product or part number manufactured or sold by Fireeye shall be limited exclusively to the right to replacement or repair as above provided. In no event shall Fireeye be liable for consequential or special damages of any nature which may arise in connection with such product or part.



FIREYE
3 Manchester Road
Derry, New Hampshire 03038 USA

CES-4001
APRIL 1997